

ASSEMBLY INSTRUCTIONS

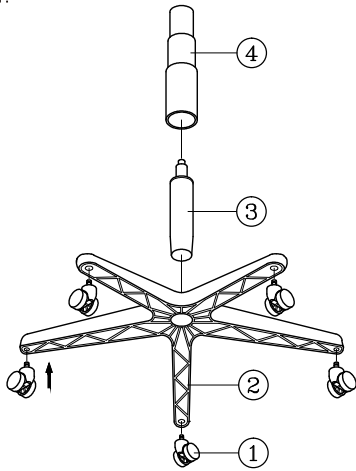
MODEL: 2641BKBK



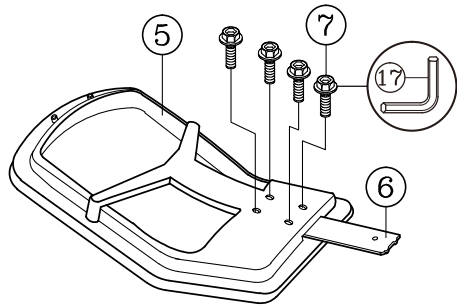
Before assembly, please remove all parts from the carton, verifying that you have the correct quantities, and read all the instructions.

PART LIST			
KEY	QTY		DESCRIPTION
1	5		Caster
2	1		Base
3	1		Seat Post
4	1		Seat Post Cover
5	1		Backrest
6	1		Backrest Post
7	4		Back Post Screw
8	1		Seat
9	1		Mechanism
10	6		Mechanism Screw
11	2		Arm Bracket
12	2		Armrest
13	2		Arm Width Adjustment Knob + Washers
14	1		Backrest Tight Screw + Washers
15	1		Back Post Bellow
16	2		Back Post Bellow Screw
17	1		M5 Size Allen Wrench

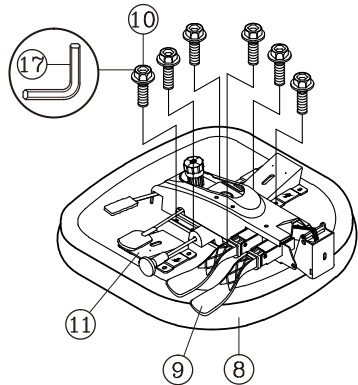
STEP 1.



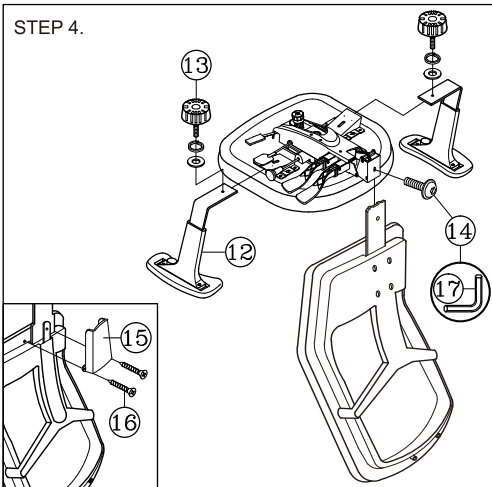
STEP 2.



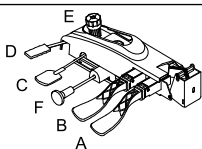
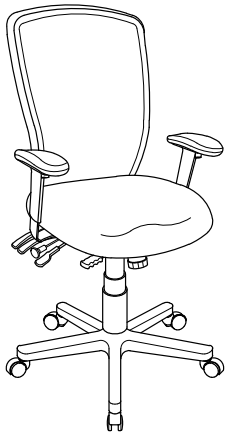
STEP 3.



STEP 4.



STEP 5.



MECHANISM INSTRUCTIONS:

- (A) Back angle adjustment lever.
- (B) Combination seat / back angle adjustment lever with infinite lock.
- (C) Seat height adjustment lever.
- (D) Forward tilt lever

*While seated, lift lever B and then leanback to activate locking mechanism;
*Pull lever D backward to allow seat to tilt forward- or -push lever D forward to straighten seat;
*To lock in desired position, push lever B downward.

- (E) Tension control knob-Turn colockwise to increase tension and counter - clockwise to decrease tension.
- (F) Sliding seat:
Seat depth adjusts for different user leg lengths.

CARE & MAINTENANCE

GENERAL CARE

To maintain the appearance of non-upholstered parts wipe the surface with a clean cloth dampened with a mild detergent solution. Do not remove any parts for separate cleaning. Do not saturate the fabric or interior with water or other cleaning liquids. Do not shampoo clean. Do not clean with hot water extraction machine. Do not clean with onsite dry cleaning machine. Protect from direct sunlight, heat and weather.

UPHOLSTERY CARE

Wipe with a clean cloth dampened with a mild upholstery detergent solution. A soft bristle brush may be used to remove ingrained soil. Use only leather care products suitable for top coated leather and strictly in accordance with the manufacturer's instructions. Spot clean as above. Treat spills and stains as soon as possible. Persistent stains may require treatment by a professional cleaner. Allow to dry thoroughly before reuse.

PREVENTATIVE MAINTENANCE & WARNING!

- Use this product only for seating one person at a time.
- Do not use this chair as a step stool/ladder.
- Do not sit on any part of the chair except the seat.
- Do not use this chair on uneven floor surfaces.
- Do not interfere with the operating of the gas lift.
- Do not use chair unless all bolts, screws and knobs are tight. At least every six months check all bolts, screws and knobs to ensure they are tight.
- If any parts are missing, broken, damaged or worn do not use the product until repairs are made using factory authorized parts.
- Dispose of packaging properly.
- Plastic bag is not a toy.
- Do not use plastic bag as a head covering as it may cause suffocation.
- Failure to follow these warnings could result in serious injury.

⚠ ATTENTION ⚠

Do not tighten any screws or bolts until the unit is completely assembled.
Ensure all bolts and screws are tightened before using the table, check bolts and screws every 6 months.
If any parts are missing, broken, damaged or worn, stop use of product until repairs have been made using factory authorized parts.
Failure to follow these warnings may result in injury.