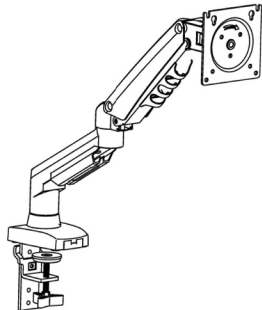


# ASSEMBLY INSTRUCTIONS

## MODEL: MASGL01BLK



### Ergonomic desktop type Cylinder Monitor Arm Installation instructions



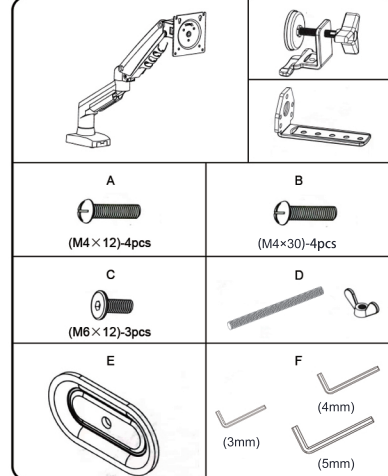
## MASGL01BLK

Fits Most Displays Size : 17"~30"  
Max Load : 4.4~19.8lbs(2~9kg)  
VESA : 75×75, 100×100mm

Severe personal injury and property damage can result from improper installation or assembly.

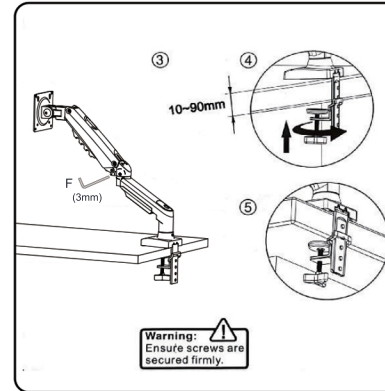
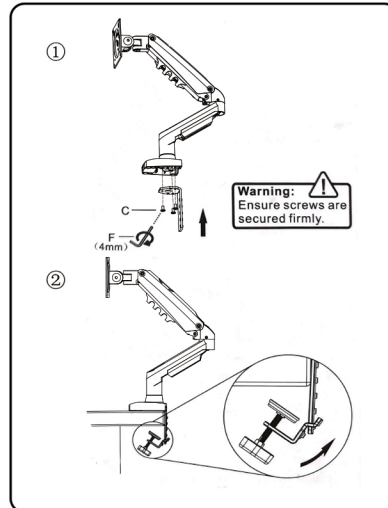
- Read the following warning carefully before beginning.
- Products must be installed by professional or installer.
  - If you do not understand the instructions or have any concerns or questions, please contact a qualified local installer.
  - Do not install or assemble if the product or hardware is damaged or missing. If you require replacement parts, please contact your local distributor for assistance.
  - This product fits most 17"-30" LCD / monitor, maximum weight of LCD / monitor, 11kg / 24 lbs.
  - Installer-friendly and straight forward.
  - For safe installation, the desk you are mounting to must support minimum 3 times the weight of the total load (the mount, the monitor and all accessories weight).
  - Do not use this product for other than the original designed.
  - This product contains moving parts, please use with caution.
  - When installing monitor, please do not damage electrical wiring or power source.
  - Installation and routing of monitor cables on the monitor bracket must comply with electrical regulations.
  - Importantly, mains- and data cables must be secured against twisting and squeezing or shearing.
  - The manufacturer will bear no responsibility to the desk of mounting, or incidental or consequential damages arising therefrom.
  - The manufacturer disclaims any liability for the modifications, improper installation, or installation over the specified weight range. The manufacturer will not be liable for any damages arising out of the use of, or inability to use, the product.
  - This product is designed for indoor use only, use of this product outdoors could lead to product failure and severe personal injury.
  - This product contains a high pressure gas spring, fire and percussion prohibited. Also it is strictly prohibited to dismantle without professional. Please return to the manufacturer or hand over to professional agencies if the product is abandoned. In order to ensure the performance of gas spring, full direction adjustment of the product arm is recommended several times per month.
  - All images are for reference only. As product in kind prevail.
- We reserve the right to modify or alter instructions. No modification or alteration without formal notice.

### Part list

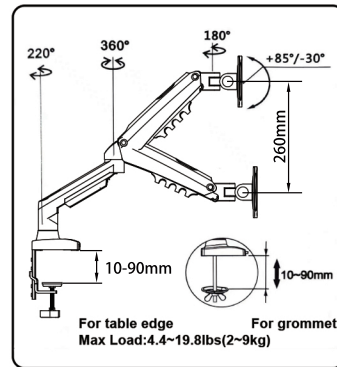


### A. Installation methods:

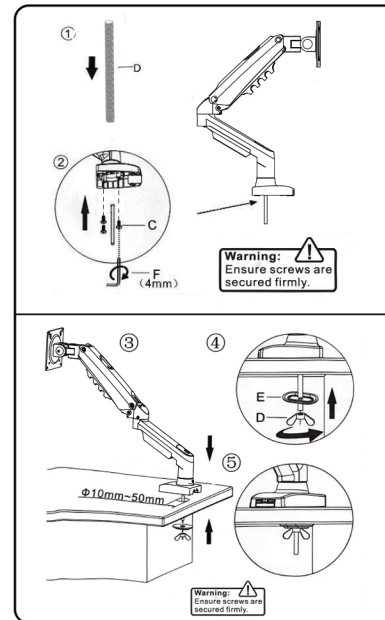
#### A1. Table edge installation:



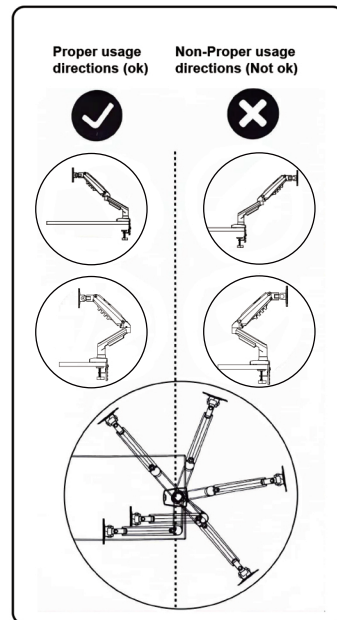
### Full adjustment after installation:



### A2. Grommet installation:



### B. Directional usage guide:



### ⚠ ATTENTION ⚠

Do not tighten any screws or bolts until the unit is completely assembled.

Ensure all bolts and screws are tightened before using the chair, check bolts and screws every 6 months.

If any parts are missing, broken, damaged or worn, stop use of product until repairs have been made using factory authorized parts.

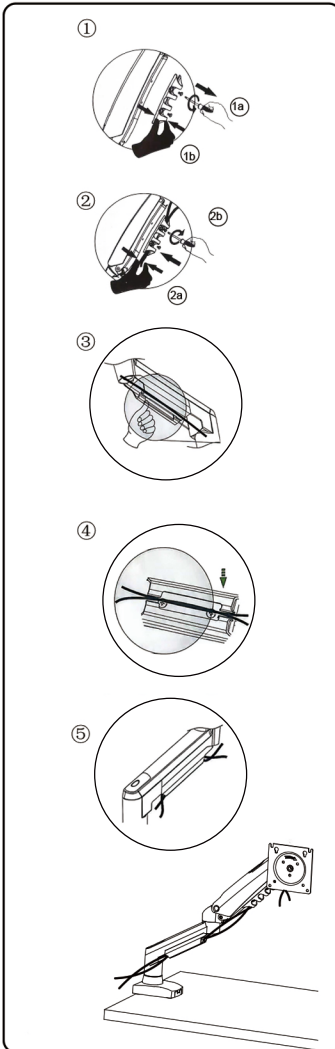
Failure to follow these warnings may result in injury.

# ASSEMBLY INSTRUCTIONS

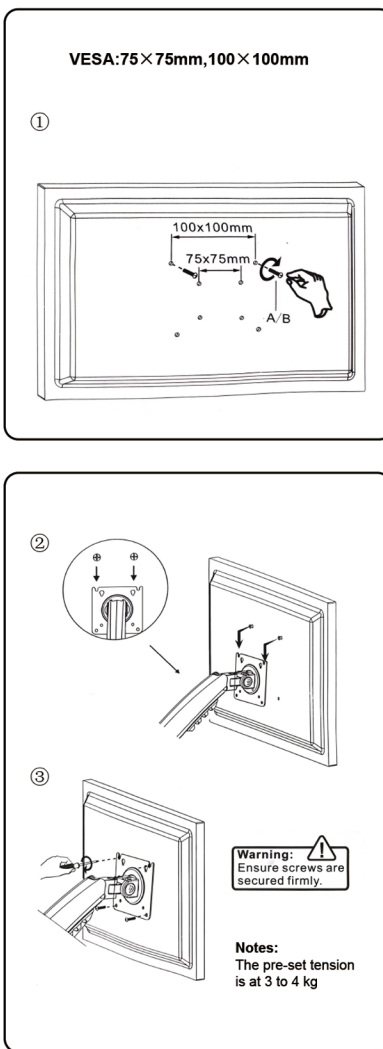
## MODEL: MASGL01BLK



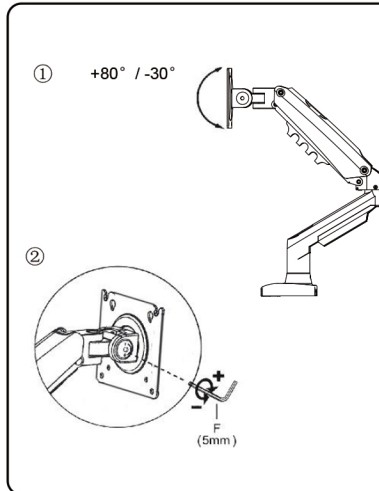
### C. Power and display lines installation



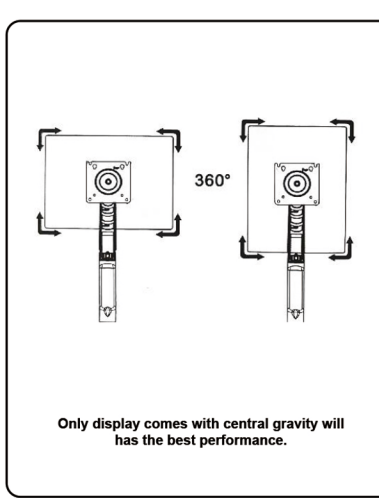
### D. Display installation



### E. Setting tilt angles



### F. Display rotation



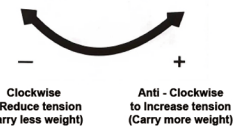
### TENSION ADJUSTMENT AFTER WALL MOUNT INSTALLATION



Do not adjust tension without putting on display.

1. Ensure display has been put onto mount.
2. Read your display packaging or manual to find out display net weight.
3. Ensure display net weight between 4.4-19.8lbs (2.0-9kg).

Adjustment sign



### Warning !



### ⚠ ATTENTION ⚠

Do not tighten any screws or bolts until the unit is completely assembled.  
Ensure all bolts and screws are tightened before using the chair, check bolts and screws every 6 months.  
If any parts are missing, broken, damaged or worn, stop use of product until repairs have been made using factory authorized parts.  
Failure to follow these warnings may result in injury.